

Cellcare 1

One-Piece Ostomy System

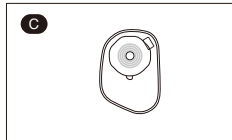
Instruction Manual for digestive stoma

- Prior to use, carefully read the instruction manual so that you understand the product's features.
- Keep the instruction manual close at hand and read it again when needed.

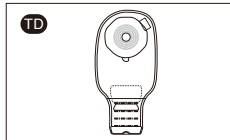
You can contact us at
 E-mail : inquiry@alcare.co.jp Fax : +81-3-5611-7827
 www.alcare.co.jp/e

Types of Cellcare 1

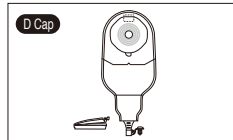
Stoma with sufficient height



Closed Type

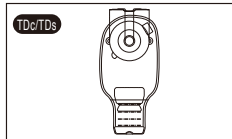


Clipless Type

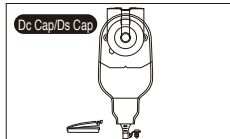


Drainable Type

Flat or retracted stoma



Clipless Type
(Convex Type)



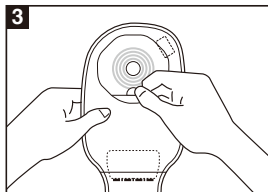
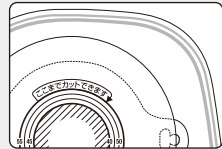
Drainable Type
(Convex Type)

How to Apply

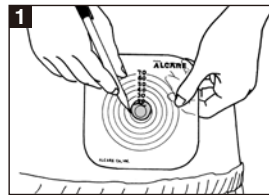
Free-Cut : Start from **1**
 Pre-Cut : Start from **3**
1 and **2** are not required for
 Pre-Cut Type.

When free-cutting type TDc or Dc caps

Since the shaded area (////) inside
the faceplate is outside the valid
range, cut it off before use.

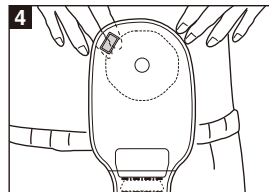


Peel Off the Release Film
 After checking that the skin
surface is completely dry, peel
the release film off the surface
of faceplate.

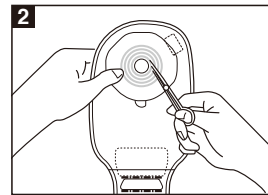


Measure Your Stoma Size
 Measure your stoma size and
make the stoma size hole in
the cutting gauge.
Make sure the hole comes
center of the gauge. Keep the
cutting gauge as your template.

* Stoma size may change. Measure
once a month to determine your
current stoma size.

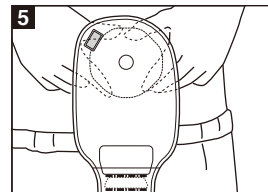


Apply the Faceplate
 Smoothing out the wrinkles,
apply the faceplate onto the
abdomen.



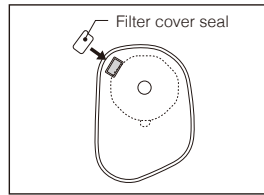
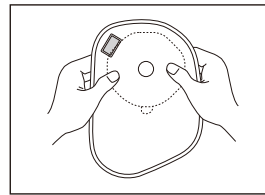
Make a Hole on Faceplate
 Turn over the cutting gauge
with a hole and place it on the
release film of the faceplate. Trace
the hole onto the faceplate. Cut
the faceplate 1 to 2mm larger
than the indicated line.

* Make the inside edge of the
faceplate smooth by rubbing with
fingers to avoid hurting your stoma.



Hold the Faceplate Well
 After application of the
faceplate, press with the hands
moving outward from the
peristoma, to achieve firm
contact with the skin.

Caution when using ventilation recoverable filter



The gas accumulating in the
ostomy bag is emitted gradually.
 * The ventilation recoverable filter
can be used safely because of its
special structure that prevents
leakage of faeces in the ostomy
bag through the filter.

Important

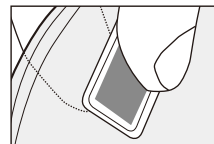
Use the filter cover seal in the package to seal the air vent if you recognize the following conditions.

● Excessive air venting

Excessive air venting may result in a vacuum state. In this case, the faeces may not move down into the ostomy bag but remain around the stoma. In order to prevent such a state, you can close the air vent with the filter cover seal in the package. By doing this, gas accumulates in the ostomy bag. Remove the seal and gently press the bag with your hands to emit the accumulated gas.

● Taking a bath or a shower

When bathing, the activated carbon in the filter may absorb water, and it may then leak after bathing and stain the clothes.

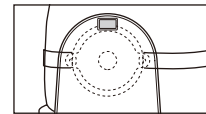


Troubleshooting tip

● If you notice "difficulty in gas venting", try the following procedures.

- * You may find faeces on the filter. Wipe and remove it with a scrubbing motion.
- * Pinch the front and back sides of the filter between your thumb and index finger, and compress two or three times.

- For more secure fixing, we recommend using it with a trunk belt.



Using Cellcare with a trunk belt ensures that it adheres closely to the skin and stays securely in place.

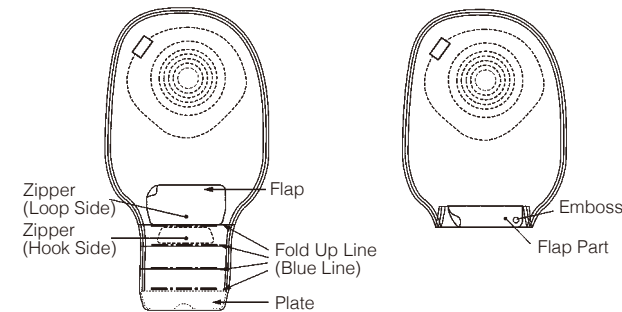
For those who use a type TD, C and D cap, use the Trunk Belt with Face Plate and the Youcare Trunk Belt.

Face Plate. For those who use type TDs, TDc, Ds cap and Dc cap, use the Youcare Trunk Belt (you cannot use type TD70 free and D cap free with a belt). For details on how to use the belt, please refer to the instruction manuals for the Trunk Belt with Face Plate and the Youcare Trunk Belt.

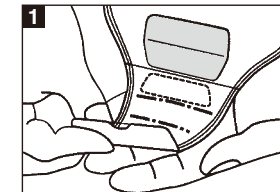
How to open and close <Clipless Type TD/TDs/TDc>

—When It Opens—

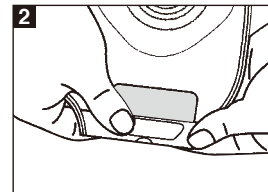
—When It Closes—



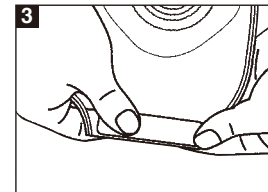
How to close



Fold up the plate 4 times
upward.



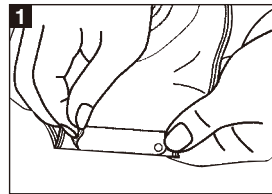
Fold up the bag end along
the Fold Up Line. The
Zipper (Hook Side) comes
up to the front.



Overlap Hook and Loop
Side of Flap and press
firmly.

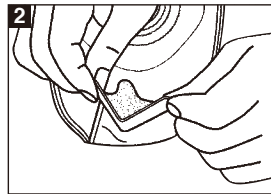
* Any looseness or wrinkles
happening in hold-up may cause
leakage of faeces or smell.

How to open



Hold the Plate with one hand and carefully pull up either left or right side (Emboss is a marker) by the other hand and remove it.

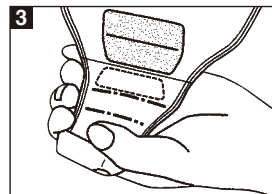
● If either Loop or Hook Side of Zipper gets wet, it may lose adhesion and may soil the clothes. Use the bag after wiping off any water or oil on the Zipper with a towel or tissue paper.



Hold the Plate upward, open the folded area. Keep the open-ended area "V" shape by folding Plate. It will be easier to discharge and wipe off.



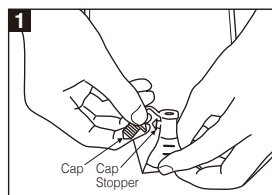
* Tightly fold in "V" shape to form a good crease.



Slowly expose the "V" shaped plate, open-ended area, to toilet and discharge the faeces.

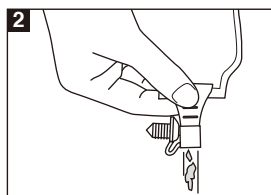
* If any faeces remain around the open-ended area, it may cause the leakage of faeces or smell. Wipe off properly before you close.

How to open and close <Drainable type D Cap/Ds Cap/Dc Cap>



Take the Cap off

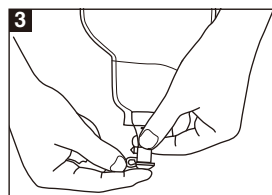
Hold the outlet upward and carefully remove the Cap so that faeces will not splash out.



Discharge the faeces

Place Cap on Cap stopper. Aim outlet downward toward toilet and discharge faeces.

* Please squeeze the outlet with your tip of fingers to discharge remained faeces in stoma bag.

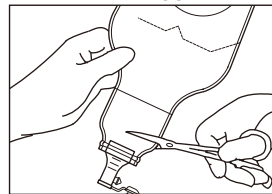


Put the Cap on

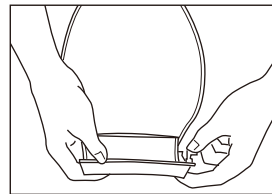
After discharge, wipe out outlet part with tissue or etc. Then put Cap on.

In case of

● Outlet is clogged with remained faeces



If discharging through the outlet is difficult by clogging, Cellcare 1 can be used as a lower-part open type stoma bag by cutting off the outlet.



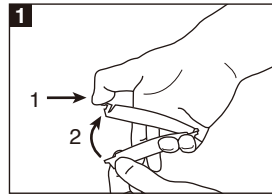
Use Clip when you apply Cellcare 1 as a lower-part open type stoma bag.

* Please refer to manual of [How to close cutted outlet].

● Having difficulty with run down of faeces in stoma bag.

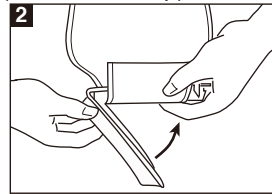
If some fibrous solid get lodged at Non-return Valve, please milk them to lower side.

● How to close cutted outlet (How to use Clip)



Open the Clip

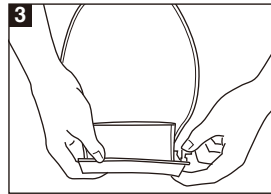
As shown, push the stopper and then pull it down to open.



Setting the Ostomy Bag Around the Clip

Adjust the Clip line of the ostomy bag to the lifted arm and twist the bag around the arm once.

* Make sure that the curve of the Clip fits to the body contour.



Close the Clip

Fasten the Clip by pushing the stopper.

* Make sure the Clip is closed securely at the end.

Precautions for Use and Storage

- After removal of the release film, avoid to touch the surface of the faceplate.
- Do not apply ointment or cream around the stoma.
- Do not reapply an ostomy bag once it has been peeled off.
- Do not wash the ostomy bag you are using with water. This may damage the bag and cause leakage.
- Do not fold the ostomy bag that has already been set. The ostomy bag may be perforated and it may cause the leakage.
- Warm the adhesive face before application if it is cold.
- In the case of free-cutting, cut within the specified valid size range. Cutting beyond the maximum valid size or using it in a size smaller than the minimum valid size may cause leakage from the faceplate.
- Do not keep an excessive amount of faeces in the ostomy bag, and dispose of it appropriately. Excessive storage may cause the faceplate to peel off due to the weight.
- Discontinue use if skin becomes irritated. In this case, consult with doctors or nurses.
- Do not store in an area of high-temperature, high-humidity area, or in a freezer.
- Do not store in direct sunlight area and avoid any pressure.
- Avoid long-term stockpiling.
- Do not peel off the release film until use.

ALCARE Co., Ltd.

19F, Arcacentral Bldg., 1-2-1 Kinshi, Sumida-ku, Tokyo, 130-0013, Japan
<http://www.alcare.co.jp/e>