

Cellcare 1

One-Piece Ostomy System

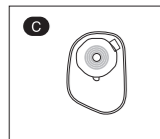
Instruction Manual

You can contact us at
E-mail : inquiry@alcare.co.jp Fax : +81-3-5611-7827
www.alcare.co.jp/e

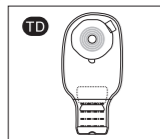
- Prior to use, carefully read the instruction manual so that you understand the product's features.
- Keep the instruction manual close at hand and read it again when needed.

Types of Cellcare 1

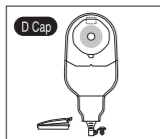
Stoma with sufficient height



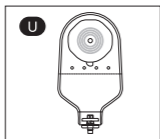
Closed Type



Clipless Type

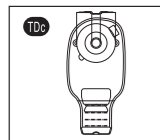


Drainable Type

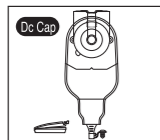


Urinary Type

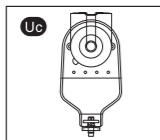
Flat or retracted stoma



Clipless Type (Convex Type)



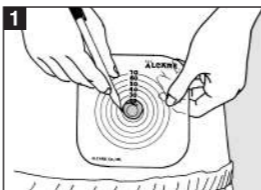
Drainable Type (Convex Type)



Urinary Type (Convex Type)

How to Apply

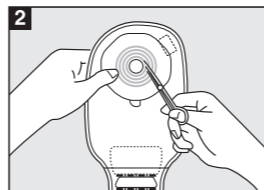
Free-Cut : Start from **1**
Pre-Cut : Start from **3**
1 and **2** are not required for Pre-Cut Type.



Measure Your Stoma Size

Measure your stoma size and make the stoma size hole in the cutting gauge. Make sure the hole comes center of the gauge. Keep the cutting gauge as your template.

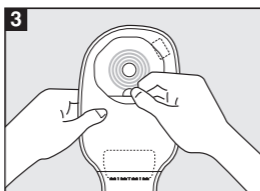
* Stoma size may change. Measure once a month to determine your current stoma size.



Make a Hole on Faceplate

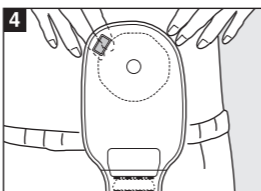
Turn over the cutting gauge with a hole and place it on the release film of the faceplate. Trace the hole onto the faceplate. Cut the faceplate 1 to 2mm larger than the indicated line.

* Make the inside edge of the faceplate smooth by rubbing with fingers to avoid hurting your stoma.



Peel Off the Release Film

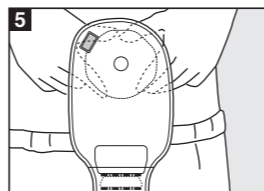
After checking that the skin surface is completely dry, peel the release film off the surface of faceplate.



Apply the Faceplate

Smoothing out the wrinkles, apply the faceplate onto the abdomen.

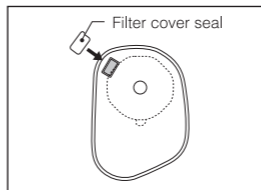
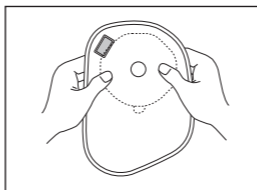
● For Urostomy
As urine keep flowing out during exchange of ostomy bag, please blot the urine with rolled gauze, then apply the ostomy bag on.



Hold the Faceplate Well

After application of the faceplate, press with the hands moving outward from the peristoma, to achieve firm contact with the skin.

Caution when using ventilation recoverable filter <TD/TDc/C>



The gas accumulating in the ostomy bag is emitted gradually.

* The ventilation recoverable filter can be used safely because of its special structure that prevents leakage of faeces in the ostomy bag through the filter.

Important

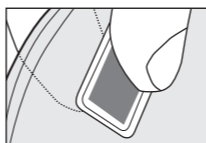
Use the filter cover seal in the package to seal the air vent if you recognize the following conditions.

● Excessive air venting

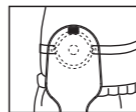
Excessive air venting may result in a vacuum state. In this case, the faeces may not move down into the ostomy bag but remain around the stoma. In order to prevent such a state, you can close the air vent with the filter cover seal in the package. By doing this, gas accumulates in the ostomy bag. Remove the seal and gently press the bag with your hands to emit the accumulated gas.

● Taking a bath or a shower

When bathing, the activated carbon in the filter may absorb water, and it may then leak after bathing and stain the clothes.



- For further fixing, it is recommended to use a belt together with Cellcare 1.



A belt is an effective way to attach Cellcare 1 closely and securely to the skin. Youcare Trunk Belt is recommended.

- * You may find faeces on the filter. Wipe and remove it with a scrubbing motion.
- * Pinch the front and back sides of the filter between your thumb and index finger, and compress two or three times.

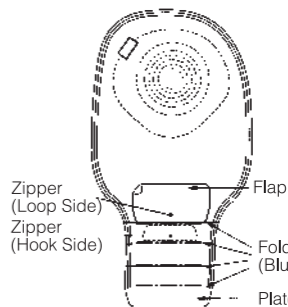
red. Do not tighten the belt too much. Two fingers of space between the belt and body may give you the appropriate pressure.

Troubleshooting tip

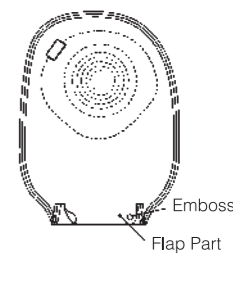
- If you notice "difficulty in gas venting", try the following procedures.

How to open and close <Clipless Type TD/TDc>

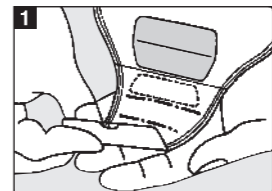
—When It Opens—



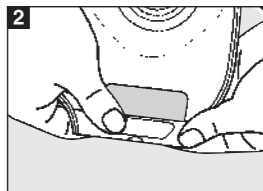
—When It Closes—



How to close

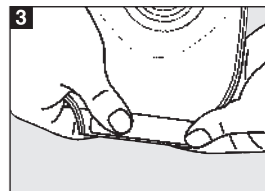


Fold up the plate 4 times upward.



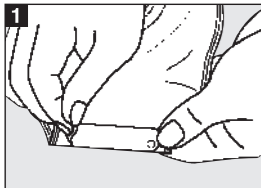
Fold up the bag end along the Fold Up Line. The Zipper (Hook Side) comes up to the front.

* Any looseness or wrinkles happening in hold-up may cause leakage of faeces or smell.



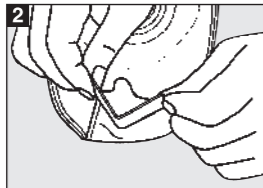
Overlap Hook and Loop Side of Flap and press firmly.

How to open



Hold the Plate with one hand and carefully pull up either left or right side (Emboss is a marker) by the other hand and remove it.

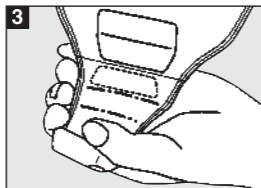
● If either Loop or Hook Side of Zipper gets wet, it may lose adhesion and may soil the clothes. Use the bag after wiping off any water or oil on the Zipper with a towel or tissue paper.



Hold the Plate upward, open the folded area. Keep the open-ended area "V" shape by folding Plate. It will be easier to discharge and wipe off.



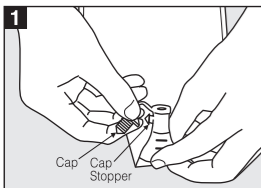
* Tightly fold in "V" shape to form a good crease.



Slowly expose the "V" shaped plate, open-ended area, to toilet and discharge the faeces.

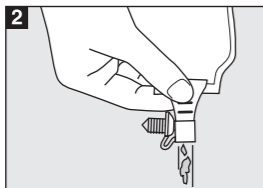
* If any faeces remain around the open-ended area, it may cause the leakage of faeces or smell. Wipe off properly before you close.

How to open and close <Drainable type D Cap/Dc Cap>



Take the Cap off

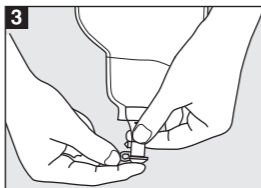
Hold the outlet upward and carefully remove the Cap so that faeces will not splash out.



Discharge the faeces

Place Cap on Cap stopper. Aim outlet downward toward toilet and discharge faeces.

* Please squeeze the outlet with your tip of fingers to discharge remained faeces in stoma bag.

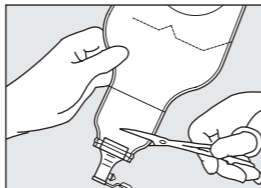


Put the Cap on

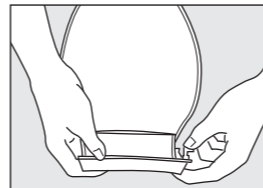
After discharge, wipe out outlet part with tissue or etc. Then put Cap on.

In case of

● Outlet is clogged with remained faeces



If discharging through the outlet is difficult by clogging, Cellcare 1 can be used as a lower-part open type stoma bag by cutting off the outlet.



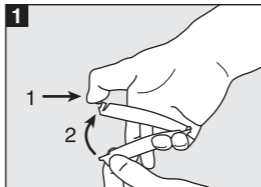
Use Clip when you apply Cellcare 1 as a lower-part open type stoma bag.

* Please refer to manual of [How to close cutted outlet].

● Having difficulty with run down of faeces in stoma bag.

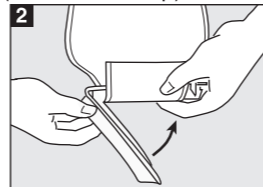
If some fibrous solid get lodged at Non-return Valve, please milk them to lower side.

● How to close cutted outlet (How to use Clip)



Open the Clip

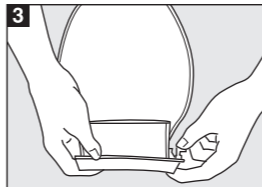
As shown, push the stopper and then pull it down to open.



Setting the Ostomy Bag Around the Clip

Adjust the Clip line of the ostomy bag to the lifted arm and twist the bag around the arm once.

* Make sure that the curve of the Clip fits to the body contour.

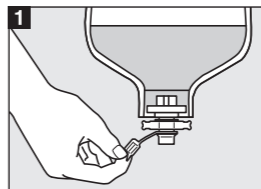


Close the Clip

Fasten the Clip by pushing the stopper.

* Make sure the Clip is closed securely at the end.

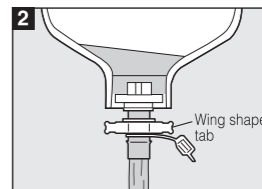
How to open and close <U/Uc>



Take the cap off

Ensure the ostomy bag is double-locked (can not rotate to the left any more), then take off the cap.

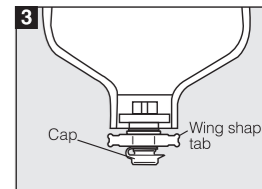
* Urine will not come out if the ostomy bag is locked.



Discharge the urine

Rotate the wing shape tab by 180 degrees.

* Urine starts to discharge.



Put the cap on

Turn the wing shape tab back after discharging the urine, then put the cap on.

* Make sure do not put the cap on first, otherwise the urine may be left in the outlet.

Precautions for Use and Storage

- After removal of the release film, avoid to touch the surface of the faceplate.
- Do not apply ointment or cream around the stoma.
- Do not reapply an ostomy bag once it has been peeled off.
- Do not fold the ostomy bag that has already been set. The ostomy bag may be perforated and it may cause the leakage.
- Warm the adhesive face before application if it is cold.
- In the case of using the free-cut faceplate, carefully cut a hole in the faceplate. Making a hole beyond the specified cut line may result in leakage through the faceplate.
- Do not keep an excessive amount of faeces in the ostomy bag. Discharge it when the bag is filled to one-third, otherwise heavy faeces may cause the detachment.
- Discontinue use if skin becomes irritated. In this case, consult with doctors or nurses.
- Do not store in an area of high-temperature, high-humidity area, or in a freezer.
- Do not store in direct sunlight area and avoid any pressure.
- Avoid long-term stockpiling.
- Do not peel off the release film until use.

ALCARE Co., Ltd.

19F, Arcacentral Bldg., 1-2-1 Kinshi, Sumida-ku, Tokyo, 130-0013, Japan
<http://www.alcare.co.jp/e>