

Cellcare 2

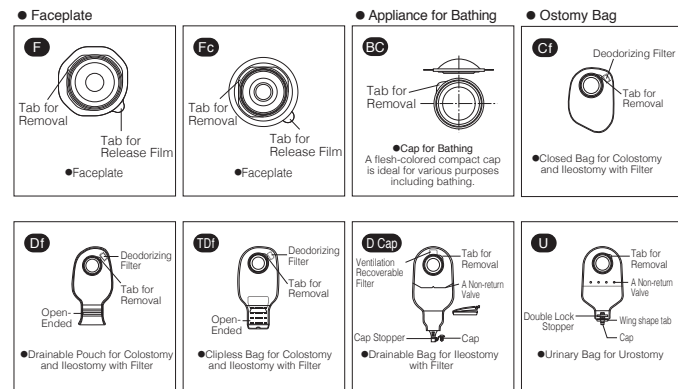
Two-Piece Ostomy System

Instruction Manual

You can contact us at
E-mail : inquiry@alcare.co.jp Fax : +81-3-5611-7827
www.alcare.co.jp/e

- Prior to use, carefully read the instruction manual so that you understand the product's features.
- Keep the instruction manual close at hand and read it again when needed.

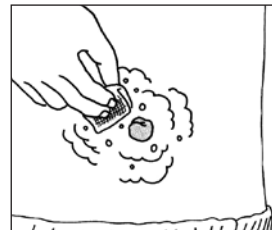
Name of Parts and Construction



Application

Preparation(Common procedures)

1 Clean the Skin around the Stoma



Before you apply an ostomy appliance, wipe off the faeces left on the stoma and the skin with tissue paper. Softly clean the skin around the stoma with gauze which is soaked with soap and lukewarm water.

Make sure to thoroughly remove any oil from the surface of the skin as it may weaken adhesion. Thoroughly rinse off any soap. Firm contact with the faceplate can not be assured or the faceplate may be detached easily if any soap remains on the skin.

Dry well.

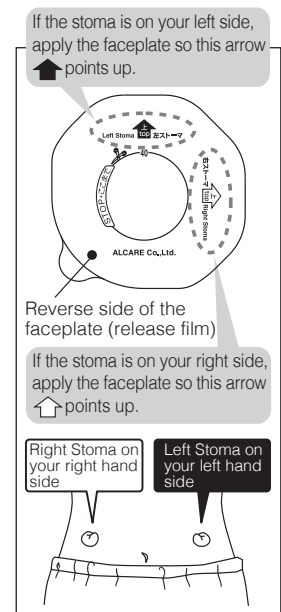
* Do not use the heated air of a hair-dryer as it will stimulate the skin.

● For Urostomy



As urine keep flowing out during the cleaning, blot the urine with rolled gauze while you are cleaning.

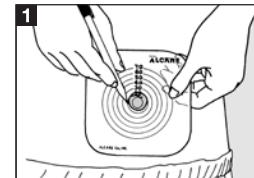
2 Check the Faceplate Application Site



Check the arrow printed on the release film and make sure that the direction of the faceplate is correct.

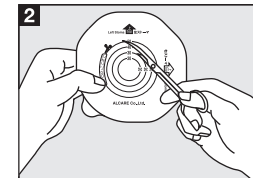
How to Apply Faceplate

Free-Cut : Start from **1**
Pre-Cut : Start from **3**
1 and **2** are not required for Pre-Cut Type.



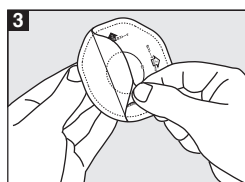
1 Measure Your Stoma Size
Measure your stoma size and make the stoma size hole in the cutting gauge. Make sure the hole comes center of the gauge. Keep the cutting gauge as your template.

* Stoma size may change. Measure once a month to determine your current stoma size.

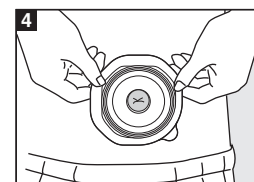


2 Make a Hole on Faceplate
Turn over the cutting gauge with a hole and place it on the release film of the faceplate. Trace the hole onto the faceplate. Cut the faceplate 1 to 2mm larger than the indicated line.

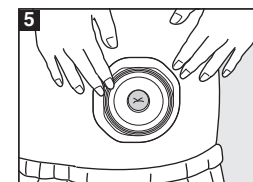
* Make the inside edge of the faceplate smooth by rubbing with fingers to avoid hurting your stoma.



3 Peel Off the Release Film
Lift the tab to remove the release film from the faceplate.

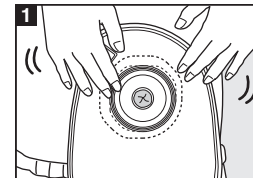


4 Apply the Faceplate
Check the upper and lower sides of the faceplate. Smoothing out the wrinkles, apply the faceplate onto the abdomen.

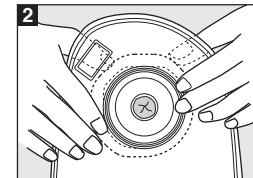


5 Hold the Faceplate Well
After application of the faceplate, press with the hands moving outward from the peristoma to achieve firm contact with the skin.

How to Apply the Ostomy Bag

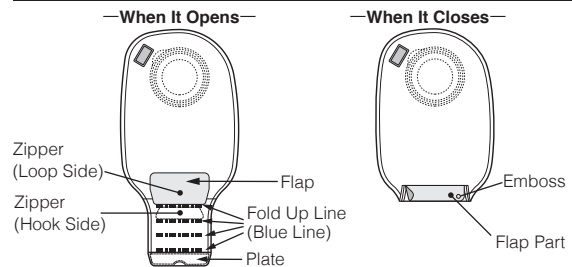


1 Adjusting the Position of the Ostomy Bag
Place the junction part of the ostomy bag on the junction part of the faceplate applied to the body. Insert your finger under the plate part and press the junction parts from above the ostomy bag with your finger to couple them.



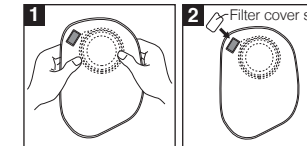
2 Setting the Ostomy Bag
Move your finger to press the remaining part until they are coupled completely.

How to open and close <Clipless type Tdf>



● If either Loop or Hook Side of Zipper gets wet, it may lose adhesion and may soil the clothes. Use the bag after wiping off any water or oil on the Zipper with a towel or tissue paper.

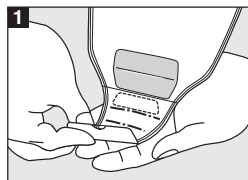
Advice about the deodorizing filter



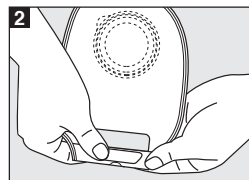
The gas accumulating in the ostomy bag is emitted gradually.

* The deodorizing filter can be used safely because of its special structure that prevents leakage of faeces in the ostomy bag through the filter of Cellcare 2.

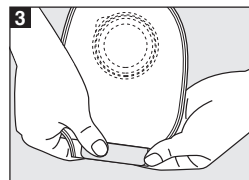
How to close



1 Fold up from the Bottom
Fold up the plate 4 times upward.
* Any looseness or wrinkles happening in hold-up may cause leakage of faeces or smell.

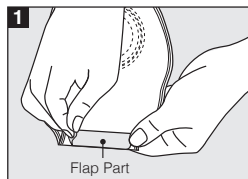


2 The Hook Side of Zipper comes front side
Fold up the bag end along the Fold Up Line. The Zipper (Hook Side) comes up to the front.

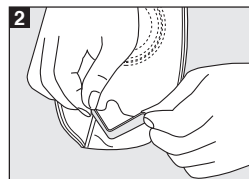


3 Overlap Loop Side on Hook Side of Zipper
Overlap Hook and Loop Side of Flap and press firmly.

How to open and discharge the faeces



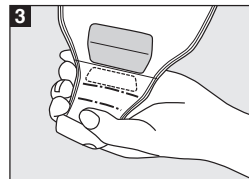
1 Detach the Flap Part
Hold the Plate with one hand and carefully pull up either left or right side (Emboss is a marker) by the other hand and remove it.



2 Open the Folded-Up Part
Hold the Plate upward, open the folded area. Keep the open-ended area "V" shape by folding Plate. It will be easier to discharge and wipe off.

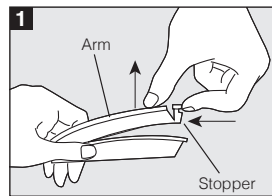


3 Discharge Faeces
* Tightly fold in "V" shape to form a good crease.

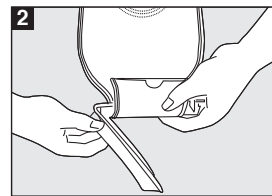


3 Discharge Faeces
Slowly expose the "V" shaped plate, open-ended area, to toilet and discharge the faeces.
* If any faeces remain around the open-ended area, it may cause the leakage of faeces or smell. Wipe off properly before you close.

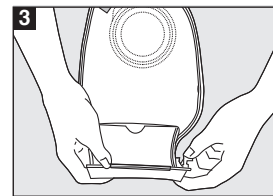
How to close <Drainable type Df>



1 Open the Clip
As shown above picture, push the stopper and then pull up the arm to open.



2 Setting the Ostomy Bag around the Clip
Adjust the clip line of the ostomy bag to the lifted arm and twist the bag around the arm once.
* Make sure that the curve of the clip fits to the body contour.



3 Close the Clip
Fasten the clip by pushing the stopper.
* Make sure the clip is closed securely at the end.

How to open and close <Drainable type D Cap>

1 Take the Cap off
Hold the outlet upward and carefully remove the Cap so that faeces will not splash out.

2 Discharge the faeces
Place Cap on Cap stopper. Aim outlet downward toward toilet and discharge faeces.
* Please squeeze the outlet with your tip of fingers to discharge remained faeces in stoma bag.

3 Put Cap on
After discharge, wipe out outlet part with tissue or etc. Then put Cap on.

How to open and close <U>

1 Take the cap off
Ensure the ostomy bag is double-locked (can not rotate to the left any more), then take off the cap.
* Urine will not come out if the ostomy bag is locked.

2 Discharge the urine
Rotate the wing shape tab by 180 degrees.
* Urine starts to discharge.

3 Put the cap on
Turn the wing shape tab back after discharging the urine, then put the cap on.
* Make sure do not put the cap on first, otherwise the urine may be left in the outlet.

In the sections of [Instructions for Use] and [Instructions for Storage], the degree of risk is defined as follows:

- Warning**..... Warning is issued to prohibit erroneous handling that may result in the development of moderate or serious physical injury.
- Caution**..... Caution is issued to prohibit erroneous handling that may result in the development of mild physical injury or property damage.

The customers are advised to receive guidance from their treating physicians or nurses before using this product. They are also advised to carefully read the instructions and fully understand the use of this product in advance. Erroneous handling may result in leakage of faeces and the development of leakage related dermatitis. Stop using this product if you notice any skin irritation.

Precautions for Use


Caution

- Do not apply ointment or cream that may weaken adhesion, around the stoma. Reduced adhesion may be a cause of leakage. (The skin film agent may also affect adhesion because of its property. Check the instructions for the agent in advance and use it carefully.)
- After removal of the release film, avoid contact between the surface of the faceplate and your fingers. Reduced adhesion may be responsible for leakage.
- Do not reapply a faceplate that has been removed. Reduced adhesion may be a cause of leakage.
- Do not fold the ostomy bag that has already been set. The ostomy bag may be perforated and leakage may occur.

- Firm contact can not be achieved if the adhesive surface of the faceplate is cold. Take it to a warm room and wait until the whole faceplate is warmed.
- In the case of use of the free-cut faceplate, carefully cut a hole in the faceplate. Making a hole beyond the specified cut line may result in leakage through the faceplate.
- Do not keep an excessive amount of faeces in the ostomy bag. Discard it when the bag is filled to one-third. Heavy faeces may accelerate detachment.
- Prolonged application may result in reduced adhesion and cause leakage. The time between exchanging the appliance may differ with sweating and fecal amount but a rough standard for exchange is every 2 – 5 days.
- Discontinue use if skin becomes irritated. In this case, consult with doctors or nurses.

Precautions for Stock

Caution

- This product should not be stored under the following conditions as its quality may deteriorate and adhesion may be lost.
- Storing in locations subject to high temperatures (exceeding 40°C) and high humidity
 - Storing at low temperatures (refrigerators etc.)
 - Storing in direct sunlight
 - Storing under pressure
 - Prolonged storage as a result of quantity purchase
- * Always check the expiration date for use indicated with  mark on the box.
- Storage of the faceplate with release film removed

ALCARE Co., Ltd.

19F, Arcacentral Bldg., 1-2-1 Kinshi, Sumida-ku, Tokyo, 130-0013, Japan
<http://www.alcare.co.jp/e>