

Procare 1

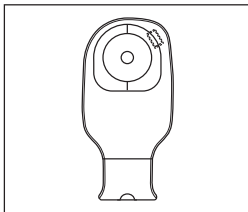
One-Piece Ostomy System

Instruction Manual

You can contact us at
E-mail : inquiry@alcare.co.jp Fax : +81-3-5611-7827
www.alcare.co.jp/e

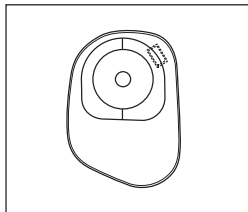
- Prior to use, carefully read the instruction manual so that you understand the product's features.
- Keep the instruction manual close at hand and read it again when needed.

Types of Ostomy Bag and Explanations of Terms



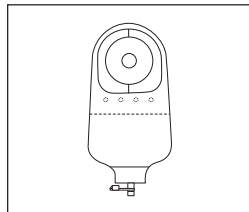
Drainable Type

Pre-cut — A standard hole size has already been cut to match stoma size (no need to cut).



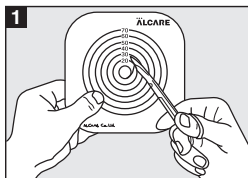
Closed Type

Free-cut — Only the starter-hole is pre-cut. The user makes a hole to fit the stoma size.



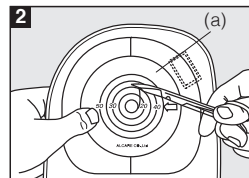
Urinary Type

How to Apply the One-Piece Ostomy Bag

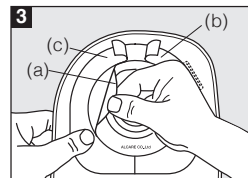


1 Make a hole in the cutting gauge*(excluding pre-cut type). Measure the stoma size. Make a hole the same size as the stoma in the cutting gauge. The hole size must be within the range of the effective size indicated on the gauge, and must be made in the middle.

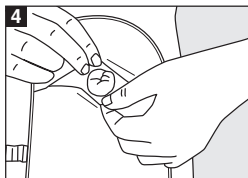
* Some products include the cutting gauge as standard equipment.



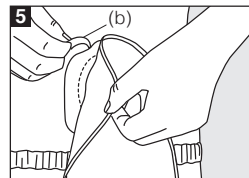
2 Make a hole in the skin barrier (excluding pre-cut type). Place the cutting gauge on the backing paper(a) of the skin barrier. Trace the hole onto the backing paper(a) with a ballpoint pen, etc. Cut out the hole with scissors etc. Smooth the cut edge flat with your finger.



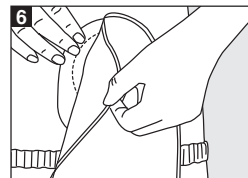
3 Peel off the backing paper. Peel off the backing paper(a) from the skin barrier. Turn up the tip of the backing paper(b) of the tape around the skin barrier.



4 Apply to fit the stoma. Open the slit and apply the skin barrier to fit the stoma while checking the stoma site.

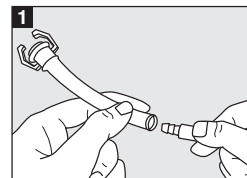


5 Stick the tape around the skin barrier. Place your finger between the ostomy bag and the sticky side. Peel off the backing paper (b) from the tape. Stick the tape from the center outward so as not to make wrinkles.

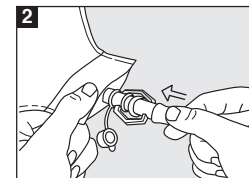


6 Press down the sticky side. Press the sticky side against the skin around the stoma to ensure adhesion.

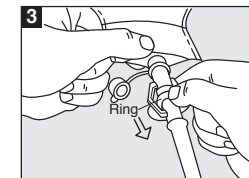
How to Use the Uro Products Connecting Tube



1 Use the attached connecting tube for connection to a urine collection bag. Insert the connector of the urine collection bag into the vinyl tube part of the connecting tube.

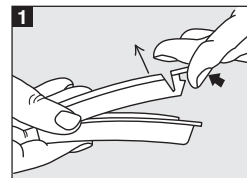


2 Squeeze the connector part of the connecting tube into the urinary outlet of the ostomy bag until you hear a click.

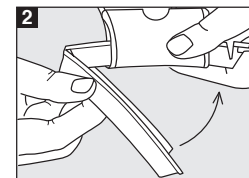


3 To remove the connector, pull out while pressing down the ring part.

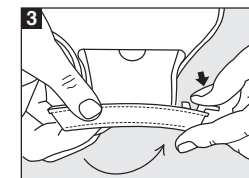
How to Use the Clip* (for Ostomy Bag with a Bottom Opening)



1 Open the clip by pressing and lifting up the stopper. Be careful not to twist the hinge part.



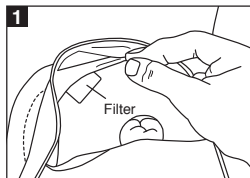
2 Make a single twist of the ostomy bag around the lifted arm part. Adjust the curve of the clip to the body curve.



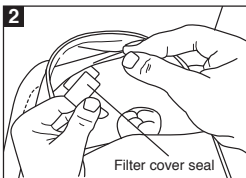
3 Close the clip while pressing the stopper. Finally, check that the clip has been properly locked.

* Some products include the clip as standard.

The Air Release Filter*



The accumulated air inside the ostomy bag is gradually released through the filter.



Normally, the filter cover seal should be kept over the hole of the filter. When air has accumulated inside the ostomy bag, peel the filter cover seal to release it.

* Some products include the air release filter as standard.

Precautions for Use and Storage

To avoid peeling off or leakage due to decreased adhesive strength, observe the following:

- Do not touch the adhesive face with oil-covered hands.
- Do not apply ointment or cream to the sticky side of the faceplate.
- Do not reapply an ostomy bag once it has been peeled off.
- Do not store in an area of high-temperature or high-humidity area or in a freezer.
- Avoid long-term stockpiling.
- Do not peel off the backing paper until use. (Discontinue use if skin becomes irritated.)

ALCARE Co., Ltd.

19F, Arcacentral Bldg., 1-2-1 Kinshi,
Sumida-ku, Tokyo, 130-0013, Japan
<http://www.alcare.co.jp/e>