

Procare 2

Two-Piece Ostomy System

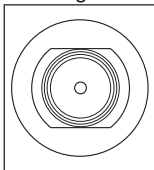
Instruction Manual

You can contact us at
E-mail : inquiry@alcare.co.jp Fax : +81-3-5611-7827
www.alcare.co.jp/e

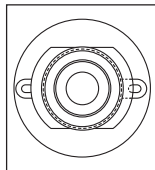
- Prior to use, carefully read the instruction manual so that you understand the product's features.
- Keep the instruction manual close at hand and read it again when needed.

Types of Ostomy Bag and Explanations of Terms

Flange

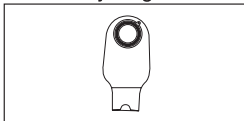


Free-cut — Only the starter hole is pre-cut. The user makes a hole to fit the stoma size.

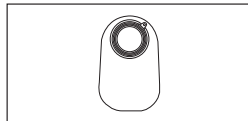


Pre-cut — A standard hole size has already been cut to match stoma size (no need to cut).

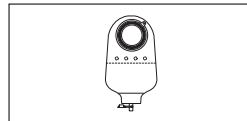
Ostomy Bag



Drainable Type

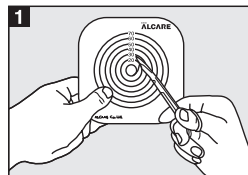


Closed Type

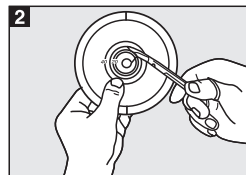


Urinary Type

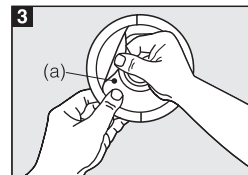
How to Apply the Flange



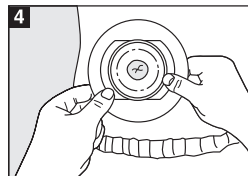
1 Make a hole in the cutting gauge (excluding pre-cut type). Measure the stoma size. Make a hole the same size as the stoma in the cutting gauge. The hole size must be within the range of the effective size indicated on the gauge, and the hole must be made in the middle.



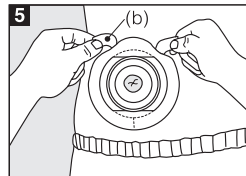
2 Make a hole in the flange (excluding pre-cut type). Place the cutting gauge on the backing paper of the flange. Trace the hole onto the backing paper with a ballpoint pen, etc. Cut out the hole with scissors etc. Smooth the cut edge flat with your finger.



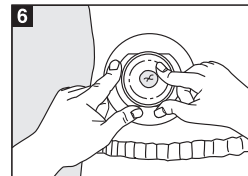
3 Peel off the backing paper. Peel off the backing paper (a) from the skin barrier.



4 Apply to fit to the stoma. Open the slit and apply the flange so that the plate of the flange is positioned perpendicular to the body axis, while checking the stoma site.

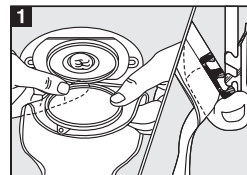


5 Stick the tape around the skin barrier (excluding Procare 2 F). Place your finger between the ostomy bag and the sticky side. Peel off the backing paper (b) from the tape. Stick the tape from the center outward so as not to make wrinkles.

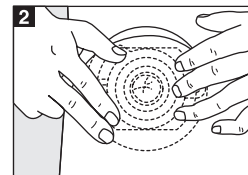


6 Press down the sticky side. Press the flange against the skin around the stoma to ensure adhesion.

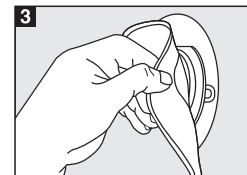
How to Apply the Ostomy Bag



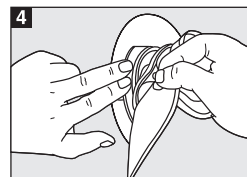
1 Place the junction part of the ostomy bag on the junction part of the flange applied to the body. Insert your finger into the flare part under the ring and press the junction parts from above the ostomy bag with your finger to couple them.



2 Move your finger to press the remaining part until they are coupled completely.

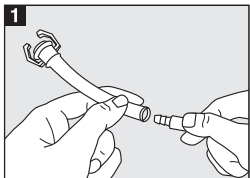


3 Finally, pull the ostomy bag to ensure proper adhesion.

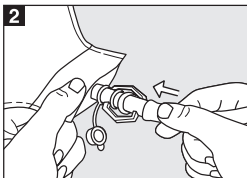


4 To remove the ostomy bag, pull the hook of the ostomy bag while holding down the plate part of the flange.

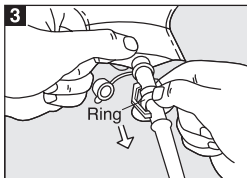
How to Use the Uro Products Connecting Tube



Use the attached connecting tube for connection to a urine collection bag. Insert the connector of the urine collection bag into the vinyl tube part of the connecting tube.



Squeeze the connector part of the connecting tube into the urinary outlet of the ostomy bag until you hear a click.



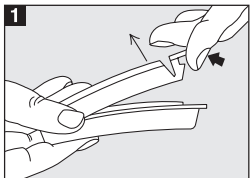
To remove the connector, pull out while pressing down the ring part.

Precautions for Use and Storage

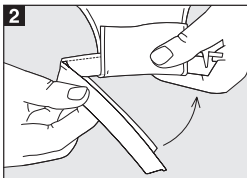
To avoid peeling off or leakage due to decreased adhesive strength, observe the following:

- Do not touch the adhesive face with oil-covered hands.
- Do not apply ointment or cream to the sticky side of the faceplate.
- Do not reapply a flange once it has been peeled off.
- Do not store in an area of high-temperature or high-humidity area or in a freezer.
- Avoid long-term stockpiling.
- Do not peel off the backing paper until use. (Discontinue use if skin becomes irritated.)

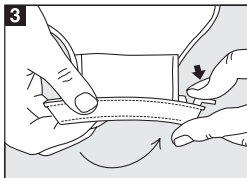
How to Use the Clip* (for Ostomy Bag with a Bottom Opening)



Open the clip by pressing and lifting up the stopper. Be careful not to twist the hinge part.



Make a single twist of the ostomy bag around the lifted arm part. Adjust the curve of the clip to the body curve.



Close the clip while pressing the stopper. Finally, check that the clip has been properly locked.

* Some products include the clip as standard.

ALCARE Co., Ltd.

19F, Arcacentral Bldg., 1-2-1 Kinshi,
Sumida-ku, Tokyo, 130-0013, Japan
<http://www.alcare.co.jp/e>