

# Procure Paste

## Paste of Skin Barrier (Karaya Gum + Citrus Pectin)

### Instruction Manual

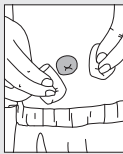
You can contact us at  
E-mail : inquiry@alcare.co.jp Fax : +81-3-5611-7827  
www.alcare.co.jp/e

- Prior to use, carefully read the instruction manual so that you understand the product's features.
- Keep the instruction manual close at hand and read it again when needed.

### Application

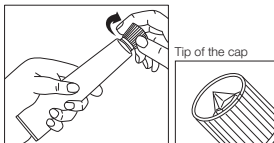
#### Prior to use :

Wipe off the faeces adhered on the stoma and the peristomal skin with tissue paper. Clean well the peristomal skin with the gauze with foamed soapy water. Thoroughly rinse off any soap from the skin with wet gauze or shower. Dry well.



#### 1 Open the Cap.

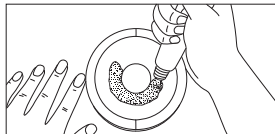
Use the projecting point of the tube cap to break the seal on the outlet. To make a good shape hole, turn around the cap several times with the projecting point inserting to the outlet.



If the seal on the outlet comes up to the outside, it may damage your skin while using. Remove the seal with scissors, but not with your hand directly.

#### 2 Apply the Paste to the Skin Side of the Skin Barrier (Faceplate, wafer, etc).

Apply the appropriate doses of paste to the surrounding of stoma size hole.

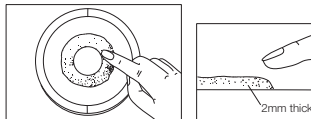


#### 3 Dry the Paste.

Leave the paste on the skin barrier for a minute to make the surface dry. You can find it dry if you do not feel sticky when you touch with the finger.

#### 4 Spread the Paste with the Finger.

Make sure the surface of paste is dry, then spread the paste by 2mm thick with the finger.

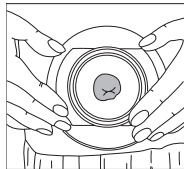


Do not remove the paste adhered to the finger by force. Wet the paste adhered to the finger with lukewarm water and softly remove it from the finger.

#### 5 Apply the Skin Barrier.

Make sure the paste on the skin barrier is dry, and then apply the skin barrier to the body.

Do not remove the paste left on the skin by force when exchanging the skin barrier. First, wet the paste with lukewarm water and then softly remove it from the skin.



#### After use :

Remove the paste off adhered around the outlet of the tube. Adhered paste to the outlet will make it difficult to fasten the cap, then the paste in the tube will be hardened, and finally the tube can not be used down to the last.

In the sections of [Precautions for Use ] and [Precautions for Stock], the degree of risk is defined as follows:

- ⚠ Warning ..... May cause physical injury
- Caution ..... May cause property damage

### Precautions for Use

#### ⚠ Warning

- Keep away from fire, or it may catch fire.
- Keep away from the children. In the case children would swallow the product, do not force them to vomit, and see a doctor immediately.
- If it reaches the eyes, wash with running water, and must be seen urgently by a specialist.
- As alcohol is contained in this product, do not use if you have the alcohol sensitivity. Also, do not use to the area of wound, swelling, eczema etc.
- Do not apply this product to your skin directly. Skin may be irritated by alcohol.
- When you find any skin trouble, stop using immediately, and see a specialist.
- Do not use in a closed space. You may feel ill by inhaling the smell of alcohol.
- The projecting point at the head of the cap is only to open the tube. Take care not to injure your hand while using.

#### Caution

- Securely fasten the cap after use, or the paste in the tube may become hard, and then the tube can not be used down to the last.

### Precautions for Stock

#### ⚠ Warning

- Keep away from fire, or it may catch fire.
- Keep away from the children. In the case children would swallow the product, do not force them to vomit, and see a doctor immediately.
- The projecting point at the head of the cap is only to open the tube. Take care not to injure your hand while using.

#### Caution

- Do not store at the place exceeding 40°C. In the case of storage at the place exceeding 40°C, the tube may be swollen or the paste in the tube may splash when open the cap.
- Securely fasten the cap after use, or the paste in the tube may become hard, and then the tube can not be used down to the last.

**ALCARE Co., Ltd.**

19F, Arcacentral Bldg., 1-2-1 Kinshil,  
Sumida-ku, Tokyo, 130-0013, Japan  
<http://www.alcare.co.jp/e>