

# Procare Soft Wafer

Wafer Type of Skin Barrier (Karaya Gum + Citrus Pectin)

## Instruction Manual

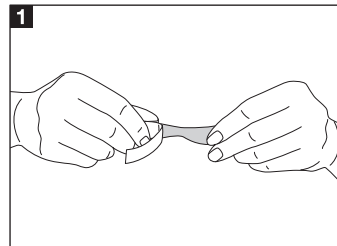
You can contact us at  
E-mail : inquiry@alcare.co.jp Fax : (81)3-5611-7827  
www.alcare.co.jp/e

- Prior to use, carefully read the instruction manual so that you understand the product's features.
- Keep the instruction manual close at hand and read it again when needed.

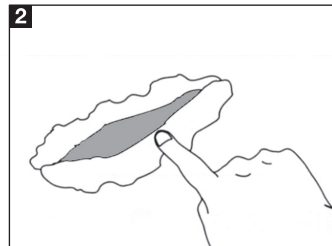
## Stick Type

Applications : Used in combination with a pouch to fill in spaces.

### How to use



Tear to fit the wrinkle or dip.

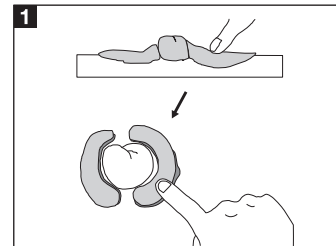


Apply the torn skin barrier to the wrinkle or dip and flatten. Apply the ostomy appliance as usual.

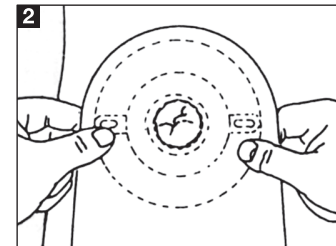
## Ring Type

Applications : Used in combination with a pouch to fill in spaces.

### How to use (1):

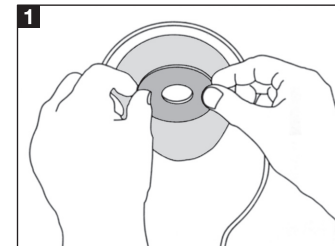


Widen the hole of the ring with your fingers to fit to the stoma.

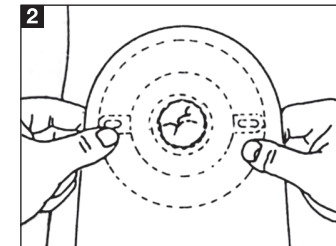


Apply it to fit the stoma and ensure adhesion to whilst avoiding occurrence of spaces around it. Apply the ostomy appliance as usual.

### How to use (2):



Apply the ring around the hole made in the faceplate to fit to the stoma on the attachment side.



Apply the ostomy appliance as usual.

## Precautions for Use and Storage

To avoid peeling off or leakage due to decreased adhesive strength, observe the following:

- Do not touch the adhesive face with oil-covered hands.
- Warm the adhesive face before application if it is cold.
- Do not store in an area of high-temperature(over 40°C) or high-humidity, or in a freezer.
- Do not store in direct sunlight.
- Do not store in a pressurized area.
- Discontinue use if skin becomes irritated.
- Do not reapply the wafer that has been removed. Reduced adhesion may be a cause of leakage.

The logo for ALCARE, featuring the word "ALCARE" in a bold, italicized, sans-serif font. The letter "A" is stylized with two small dots above it, resembling a pair of eyes or a specific character.

### **ALCARE Co., Ltd.**

19F, Arcacentral Bldg., 1-2-1 Kinshi, Sumida-ku, Tokyo,  
130-0013, Japan

[www.alcare.co.jp](http://www.alcare.co.jp)