

Procare Wafer

Wafer Type of Skin Barrier (Karaya Gum / Citrus Pectin)

Instruction Manual

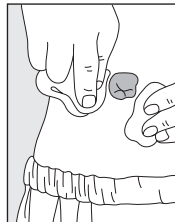
You can contact us at
E-mail : inquiry@alcare.co.jp Fax : +81-3-5611-7827
www.alcare.co.jp/e

- Prior to use, carefully read the instruction manual so that you understand the product's features.
- Keep the instruction manual close at hand and read it again when needed.

Clean the Skin around the Stoma

Wipe off the faeces left on the stoma with tissue paper. Softly clean the peristoma skin with gauze which is soaked with lukewarm water.

Make sure to thoroughly remove any oil from the surface of the skin as it may weaken adhesion. Thoroughly rinse off any soap. Firm contact with the faceplate can not be assured or the faceplate may be detached easily if any soap remains on the skin.

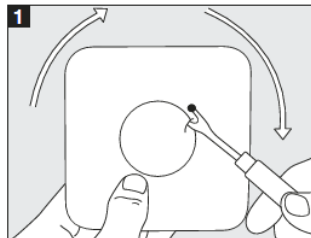


Sheet Type

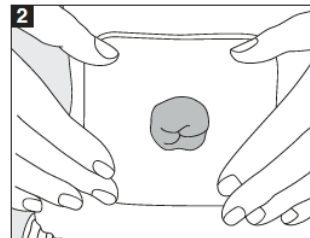
Applications: Cut and used for various purposes.

How to use (1):

For combined use with A-type appliance



1 Make a hole exactly the same size as the stoma in the middle.



2 Ensure adhesion of the sticky side of the pouch to the peristomal skin to avoid occurrence of spaces between them.

Precautions for Use and Storage

To avoid peeling off or leakage due to decreased adhesive strength, observe the following:

- Use for the healthy skin only.
- Do not take a high-temperature bath too long time.
- Do not store in an area of high-temperature or high-humidity, or in a freezer.
- Keep out of reach of small children.
- Discontinue use if skin becomes irritated.

ALCARE Co., Ltd.

19F, Arcacentral Bldg., 1-2-1 Kinshi,
Sumida-ku, Tokyo, 130-0013, Japan