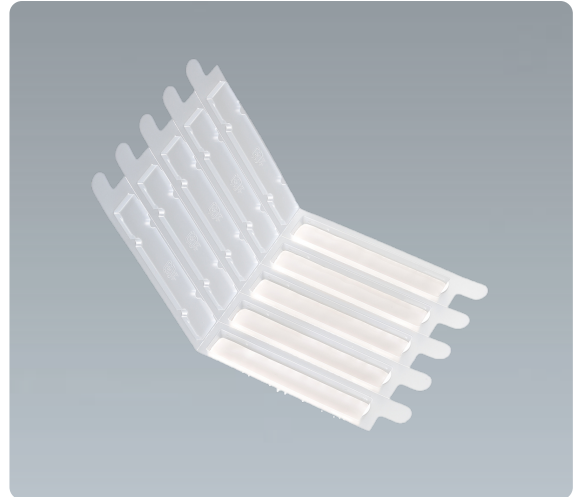


# Procare Soft Wafer-Stick

## Wafer Type of Skin Barrier

### Features

- Most suitable to smoothen wrinkles and dents around stoma.
- Very soft and flexible enough to be molded freely.
- Double-sided adhesive wafer can be adapted to various ostomy appliances' faceplate.



Type	Product Code No.	Specification	Contents Per Box
-	15601	15 mm x 100 mm	10 pieces